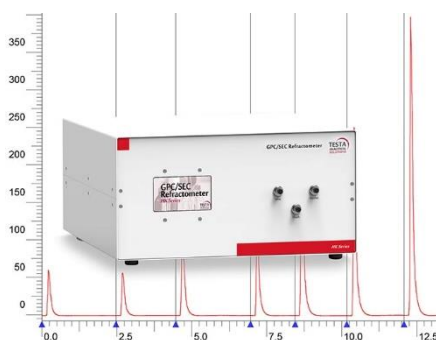


## Universal Detector for Challenging Chromatography Applications

### TESTA Analytical

offer a range of **Differential Refractive Index (DRI) detectors** designed and proven to enhance the performance of almost any GPC/SEC, HPLC or UHPLC system.



Caption: Differential Refractive Index detector optimized for GPC/SEC applications  
(courtesy – TESTA Analytical)

### Measuring the refractive index

of an analyte relative to the solvent – a high-performance Differential Refractive Index (DRI) detector is widely acknowledged as one of the most flexible detectors for liquid chromatography use.

### The baseline signal stability

of any liquid chromatography detector is particularly important, as it is a limiting factor in peak determination. Detector stability gains even more importance where analysis

TESTA ANALYTICAL SOLUTIONS e.K. • Sophienstraße 5 • 12203 Berlin

time is long, such as is commonly encountered in high resolution applications.

Operating from room temperature up to 80°C with high thermal stability, TESTA's DRI detector has been designed with particular attention to eliminating drift. As a consequence of its unmatched baseline stability, the DRI detector delivers excellent performance for even challenging chromatographic separations.

### **Designed, manufactured**

and quality tested in Germany – TESTA Analytical DRI detectors are available on competitive delivery times.

### **For further information please**

visit <https://www.testa-analytical.com/gpc-sec-chromatography.html> or contact Testa Analytical Solutions on +49-30-864-24076 / [info@testa-analytical.com](mailto:info@testa-analytical.com).

### **TESTA Analytical Solutions**

is a leading specialist supplier of liquid chromatography instruments and detectors. Drawing upon over 30 years' experience, TESTA Analytical Solutions has established itself as a respected creator and supplier of top quality, innovative, high performance chromatography instrument kits, and detectors with end user and OEM clients around the world.

### **For Further Information:**

Technical: Carlo Dessy

(tel. +49-30-864-24076 / email [cdessy@testa-analytical.com](mailto:cdessy@testa-analytical.com))